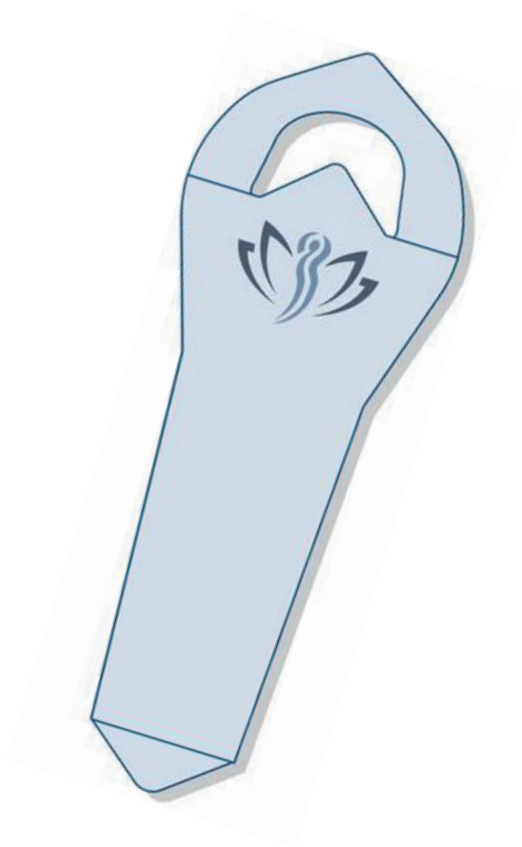


# EasyDrainer<sup>®</sup>

by GP Medical Devices



**easy** and **hygienic**  
draining of the ostomy pouch

# Emptying the pouch

Emptying the pouch is one of the first skills needed to be learned after the operation and it is an action that will be performed very often hereafter.

It is recommended to empty or change the pouch when it is one-third to one-half full. A pouch that is too full may start to pull away from the skin resulting in leaks, odours and potential infections. Normally the pouch needs to be emptied 5-8 times in a 24hr period.

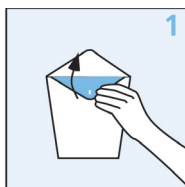
Draining a pouch can be both inconvenient and embarrassing particularly in public rest rooms since they lack privacy.

## EasyDrainer<sup>®</sup>

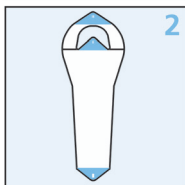
- saves time
- no more awkward standing positions
- reduces bad odour
- no more splashing on surroundings
- reduces hygienic risks
- reduces concerns on the job and when socializing
- no more embarrassment in public rest-rooms
- can be flushed down the toilet after use

EasyDrainer<sup>®</sup> offers flexibility when performing the drainage. With EasyDrainer<sup>®</sup> the pouch can be comfortably drained in a public restroom or workplace with comfort and ease, and provide a sense of cleanliness.

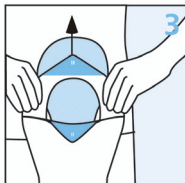
Open the bag with EasyDrainer<sup>®</sup>



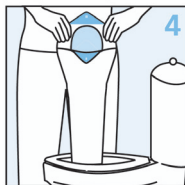
Unfold EasyDrainer<sup>®</sup>



Insert the ostomy bag into EasyDrainer<sup>®</sup> – Fix EasyDrainer<sup>®</sup> with the tape if necessary



Place EasyDrainer<sup>®</sup> into the toilet bowl



Open the drain and transfer the content of the ostomy bag into EasyDrainer<sup>®</sup>. Clean the end of the drain and roll it into the close position



Drop EasyDrainer<sup>®</sup> into the toilet and flush





For more information please contact

GP Medical Devices  
Nupark 51, DK-7500 Holstebro

Phone: +46 (0)31 – 338 42 00

Email: [info@gpmp.dk](mailto:info@gpmp.dk)

Website: [www.gpmd.dk](http://www.gpmd.dk)

EasyDrainer<sup>®</sup> is fully reimbursed in Sweden